

# 'Say it your own way'

## Children's participation in assessment

A new publication from the Department for Education and Skills available from late May 2006.

### What is it?

A printed guide and CD ROM of practical resources to support professionals to give children a voice in assessment processes.

Listening to children is a skill that you can learn with support and practice. The guide outlines how art, play, music, drama can all be used to help children to reflect on their experiences, their feelings, their wishes, their support networks to inform assessment and keep children at the heart of the process. The CD ROM resources provide simple examples of how to use techniques such as eco-mapping, timelines, diaries to help children share relevant information with you and to plan for the future using creative and reflective approaches.



### Who is it for?

Those carrying out assessment of children and young people and drawing up and reviewing subsequent plans. These may include:

- Social workers
- Connexions' Personal Advisers
- SENCOs
- Professionals undertaking a Common Assessment
- Youth justice workers



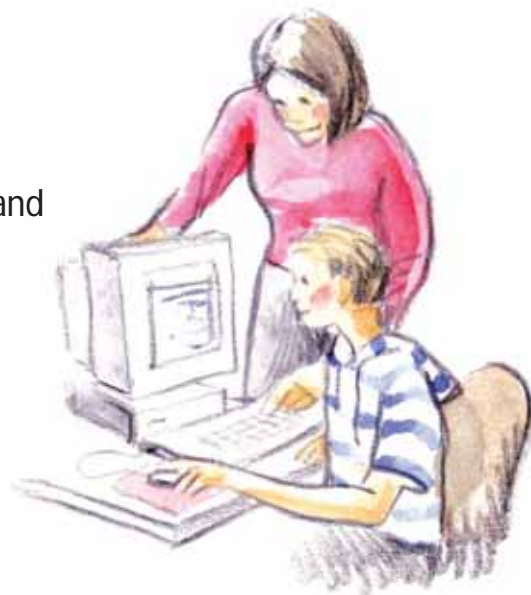
## The guide and CD ROM resources...

### support assessment under

- The Framework for the Assessment of Children in Need and their Families (Assessment Framework) and the Integrated Children's System (ICS).
- The Connexions' Assessment, Planning, Implementation and Review (APIR) Framework.
- The Common Assessment Framework (CAF).

### and the planning and review of...

- The Individual Education Plan (IEP) that follows assessment of need under the Special Educational Needs Code of Practice 2002;
- The Individual Reintegration Plan for a child excluded from school;
- The Personal Education Plan (PEP) for a looked after child;
- Transition planning under the Special Education Needs Code of Practice 2002;
- Pathway Planning and review for care leavers;
- Planning under the Connexions' Assessment, Planning, Implementation and Review (APIR) framework.



## The guide sets out a number of principles and reasons for involving children in assessment:

- Direct work with children must be at the heart of every assessment
- You should listen to a child before you try to make changes in their life, at the same time ensuring their safety
- Children have knowledge and understanding that will help you to help them
- Direct work with children should use child-centred methods of communication
- Creative and activity-based ways of communicating can help adults to listen to children and children to communicate with adults



The guide and CD ROM of resources are available  
(Price £12) from the Barnardo's website

[www.barnardos.org.uk](http://www.barnardos.org.uk)